

AI

in the world of horses.

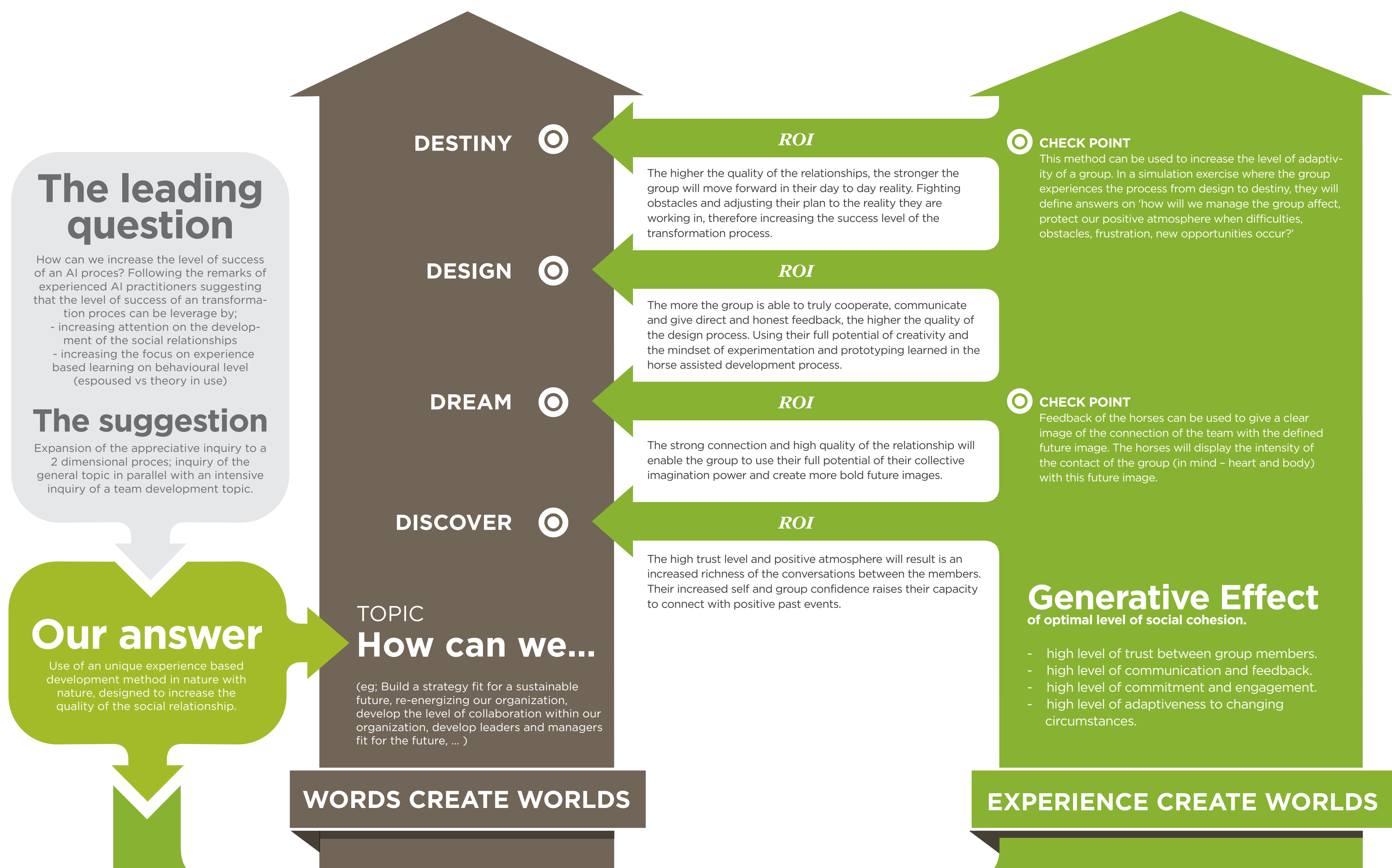
An ideal atmosphere for generative connection.

Change happens when people truly come together. When they collectively gain new insights and create a positive future image. This momentum generates the energy to shift perspective and evokes the creativity to find opportunities, to help this future emerge into the present.

There is great value in uniting two wreck braking models for change;
Appreciative inquiry and Horse assisted development.

Co-create the road to a positive sustainable future

Raise the speed & quality of the proces

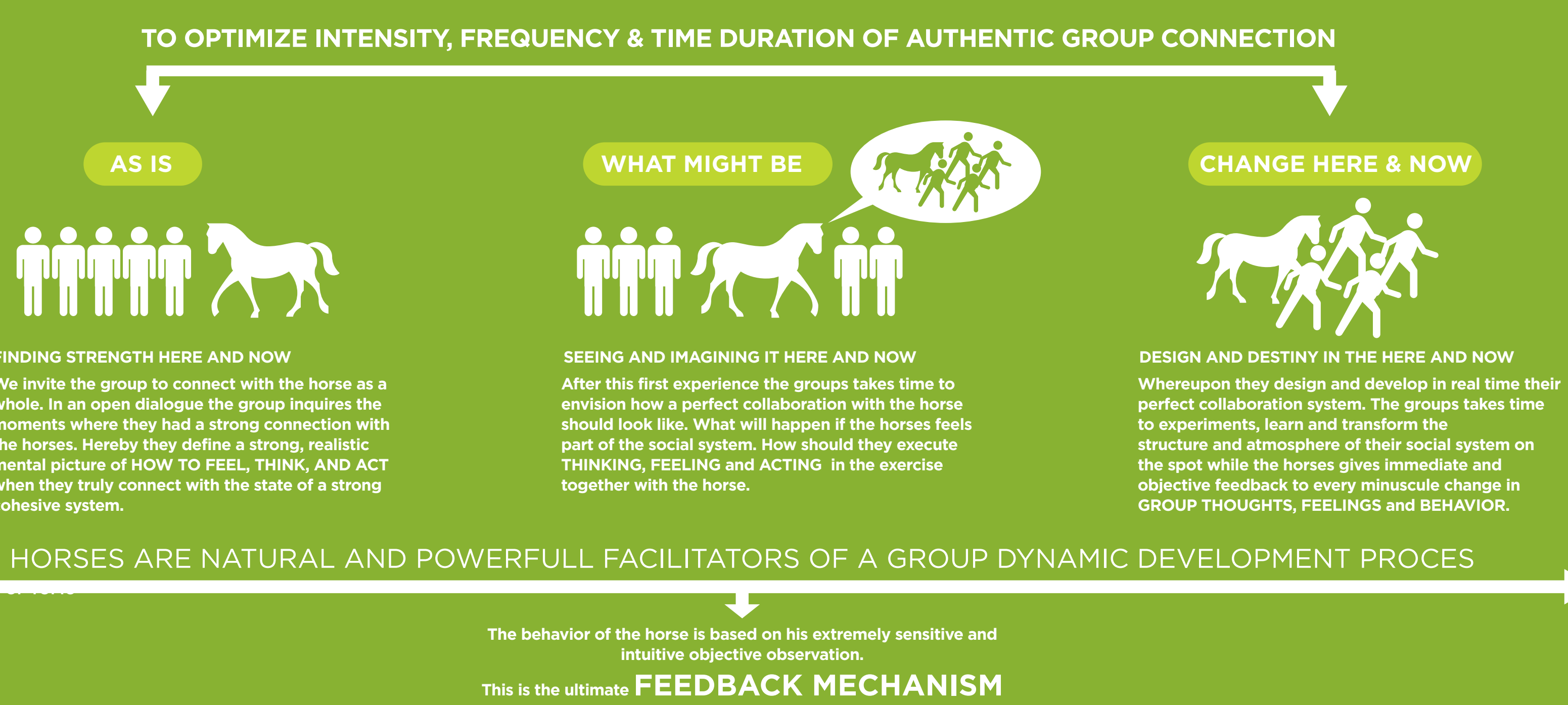


TOPIC **How can we create an collective affirmative mindset and high quality social relationships within our group?**

*** BY APPLYING BIOMIMICRI AND TAKING THE SOCIAL SYSTEM OF A HERD AS INSPIRATION**
Biology describes a herd as a group social prey animals, here horses, who live and work strongly together to survive.
Nature designed them an extremely sensitive natural intuition, a strong and authentic communication system and a powerful social organization, by which they are, at any given moment, capable to:
- be, with every cell of their body, in the present.
- be in total connection with each other.
- be in total connection with their environment.
- be in total connection with the goal.
- communicate authentic, direct and sensitive.

*** BY WORKING WITH HORSES**
For horses we humans are predators and their natural reaction is distrust.
If a group of humans wants to successfully invite them in there social system and build authentic collaborative relationships, a special atmosphere is needed.
The social system has to vibrate extreme levels of honesty, congruency, trust, respect, positive intention, commitment, engagement and honesty.

*** BY REFLECTING ON THE IMMEDIATE OBJECTIVE, JUDGEMENT FREE FEEDBACK**
Horses will take there place as a member of a human social system if they feel an atmosphere where each member and thus on a synergetic level, the whole system is;
- totally in the present, here and now.
- vibrating positive intentions.
- high level of trustworthiness within the group.
- communicating authentic and congruent (alignment of mind - heart & body).
- strongly connected to each other.
- strongly connected to the goal.



In nature with nature.

Added Value of the horse assisted team development proces
- WHOLE BEING TRANSFORMATION from language to language, intentions, behavior and non-verbal actions.
- INCREASE OF SELF MONITORING CAPACITY.
- INCREASE BELIEVE OF POSSIBILITY OF SPEED OF CHANGE IN SOCIAL COHESION.
- KNOWLEDGE OF AND EXPERIENCE WITH A DESIGN PROCES.
- POWERFULL INSIGHT WHICH WILL HAVE A GENERATIVE EFFECT IN DIFFERENT PHASES OF THE AI PROCES.

- AI BASIC PRINCIPALS**
- POSITIVE IMAGE
 - POSITIVE ACTION
 - SOCIAL CONSTRUCTIONISM
 - LIFE CENTRIC
 - AFFIRMATIVE VOCABULARY
 - THEORY OF AFFIRMATIVE ORGANISATION
 - ORGANIZATIONAL INNER DIALOGUE
 - HISTORY AS POSSIBILITY
 - THE LIBERATION OF POWER

HORSE ASSISTANT DEVELOPMENT
REINFORCED AI PRINCIPALS